



For Earth, For Life
Kubota



ТРАКТОРЫ • НАВЕСНОЕ ОБОРУДОВАНИЕ • ОРИГИНАЛЬНЫЕ ЗАПАСНЫЕ ЧАСТИ

BX

KUBOTA DIESEL TRACTOR BX1870/BX2370 BX2670/BX25D

Improved comfort and increased ease of operation make the sub-compact BX70-1 Series the best choice for all your jobs around the house and around your acreage.

Now
available
with Easy-over
Mid-mount
Mower





From the most routine garden tasks the BX-Series has you covered four

From mowing the lawn to a complete landscaping makeover, nothing beats Kubota BX tractors for getting the job done. Assembled in Gainesville, GA since 1999, Kubota BX-Series tractors have been and remain the top-selling sub-compact tractor series in the United States for over a decade.

Comfort and ease of operation—hallmarks of the BX-Series—have been enhanced to reduce operator fatigue and increase operator satisfaction. The BX25D is equipped with backhoe and front loader as standard equipment, making it the versatile choice for those special tasks.





BX1870 not shown above

to the biggest landscaping projects,
ways.

KUBOTA SUB-COMPACT DIESEL TRACTOR SERIES
BX1870/BX2370/BX2670/BX25D

Power and versatility in a compact, highly maneuverable and durable tractor.

Got a tough job? Get a tough tractor. Kubota BX-Series sub-compact tractors have the power and versatility to tackle challenging jobs as well as dream projects. A powerful and efficient 3-cylinder diesel engine and 4WD provide the traction—and confidence—you need to haul, climb, and pull your way through the job. A 3-point hitch and front control valve provide versatility by letting you quickly attach a wide range of front and rear implements.

COMPACT SIZE

With an overall length similar to a standard garden tractor, BX-Series tractors are easy to drive and can work smoothly even in tight spaces. The BX-Series' compact size also means they're gentle on turf. But don't be fooled by their compact dimensions—these tractors are powerful and capable of handling a wide variety of chores and projects.



PERFORMANCE-MATCHED KUBOTA DIESEL ENGINES

The BX1870/BX2370/BX2670/BX25D are powered by rugged engines built by Kubota exclusively for the BX Series. The BX1870 and BX2370/BX25D come with 18- and 23-horsepower diesel engines, while the BX2670 packs a new 25.5-horsepower diesel engine under the hood. All three engines are 3-cylinder workhorses that offer power unparalleled for tractors this size...more than enough muscle for all your gardening and mowing jobs.

DIESEL VS. GASOLINE

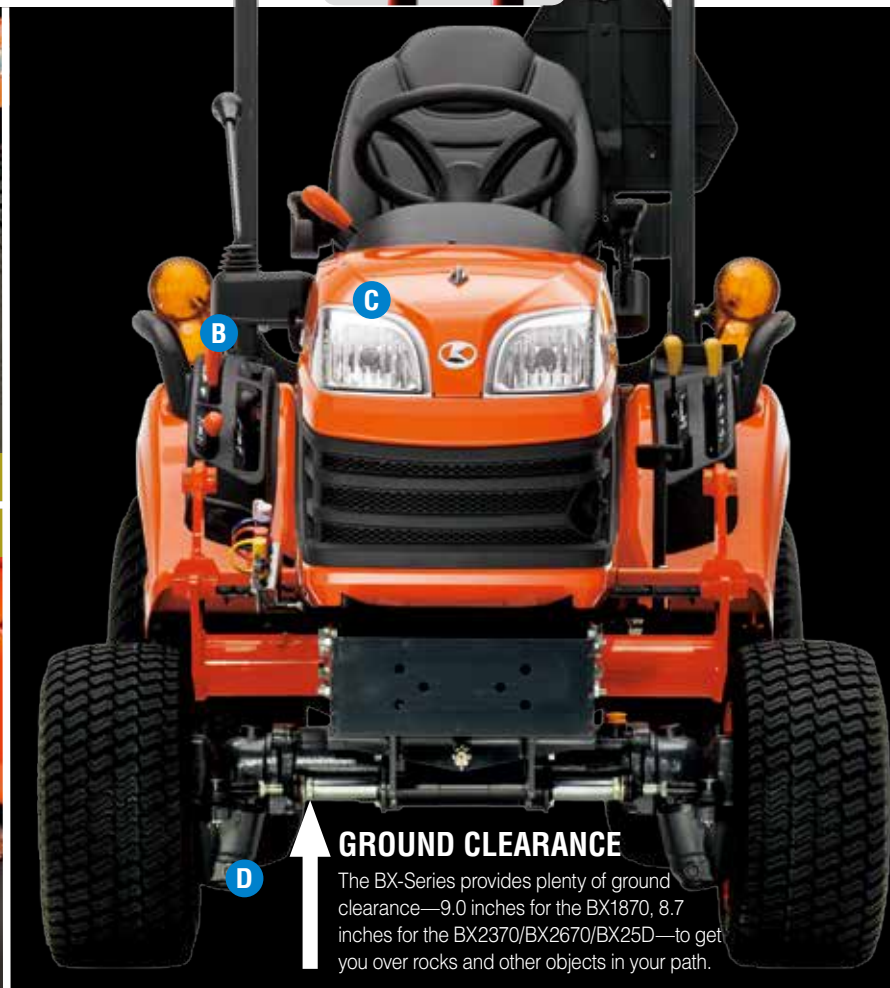
Compared to gasoline engines, Kubota diesel engines offer far greater torque for more power, so they're less likely to slow down or stall under load. Diesel engines also require less maintenance and boast greater fuel efficiency - up to 30% less fuel consumption - when compared to gasoline engines.



The BX-Series feature a sturdy, hydraulically controlled Category I 3-point hitch that allows you to attach a wide variety of rear implements.

A front 4-position valve lets you quickly and easily attach a front loader and other front-mounted implements. The valve is easy to access but won't obstruct operations or impact the tractor's sleek appearance. (Tractor can be ordered without valve.)

Strong and durable, the BX-Series' metal hood and fenders resist dings and dents, ensuring that your BX tractor continues to look as good as it performs.



Mounted on the ROPS within easy reach from the seat, two optional twin work lights add more light to brighten and widen the work area illuminated by the two headlights. The work lights can be easily reversed to illuminate rear implement work.

With increments of one quarter inch at the lower link end, Kubota's quarter-inching valve provides easier implement control. The lever guide's regulator allows smaller adjustments, which are often required when attaching/detaching 3-point mounted implements or performing delicate jobs.

The halogen headlights of the BX-Series provide clear, bright illumination when working and traveling at night.

Kubota's BX-Series' rugged and sturdy 4-wheel drive (4WD) provides powerful traction for heavy-duty front-loader work and operating other implements.

On the BX-Series, the radiator is located in the middle of the tractor rather than at the front. Air is taken in from the operator area and pushed toward the front through the radiator. This reduces overheating, keeps grass from clogging the radiator grill, and prevents hot air from blowing on the operator.

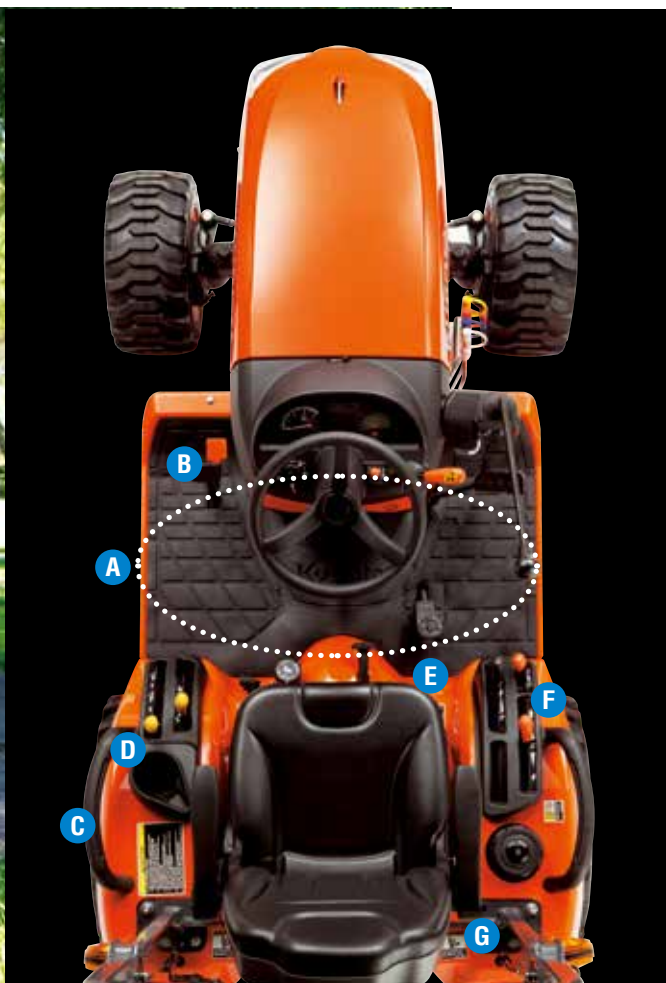


You get more work done when you're not stopping frequently to refuel. The BX-Series' large 6.6 gallon fuel tank ensures that refueling operations don't hinder your work schedule.



Improved operability, comfort, and more spacious from seat to deck

Ease of operation and comfort have been given top priority in the BX-Series, starting with a redesigned instrument panel, and operators deck. A fully-padded deluxe high-back reclining seat with dual adjustable armrests improves operator comfort, as does the repositioned steering wheel. A new foldable ROPS not only allows passage under low-hanging obstacles, but also makes storage quick and easy.



SPACIOUS OPERATOR AREA

Operator comfort has been enhanced by a new, fully flat deck layout with the brake on the left side, providing more room for your feet. The new design also improves operability.

A. FULLY FLAT FLOOR FOR INCREASED LEGROOM
B. NEW LEFT-SIDE BRAKE PEDAL
C. HAND RAIL

D. CUP HOLDER
E. 12V DC OUTLET
F. DELUXE LEVER GUIDE
G. TOOL BOX (Optional)



DELUXE HIGH-BACK RECLINING SEAT

BX-Series models* are now equipped with a deluxe seat with dual armrests to keep the operator comfortable even when tackling tough jobs. This fully adjustable high-back seat also features a reclining back and soft cushioning to support the back and legs.

(*Except the BX1870)

1. EASY TO READ DASH PANEL

The control panel design enhances ease of use by placing all vital indicators on a single, easy to read panel. The panel features a tachometer on the left and an LCD display for fuel level and coolant temperature gauges on the right. Warning indicators for battery, headlights, turn signal, and low fuel are in the middle. In just a glance, you get a complete overview of your tractor's functions and overall condition.

2. NEW STEERING WHEEL POSITION

The steering wheel on all BX-Series tractors has been repositioned to provide any operator with better steering control and greater comfort.



1

3

2

4

3. CRUISE CONTROL

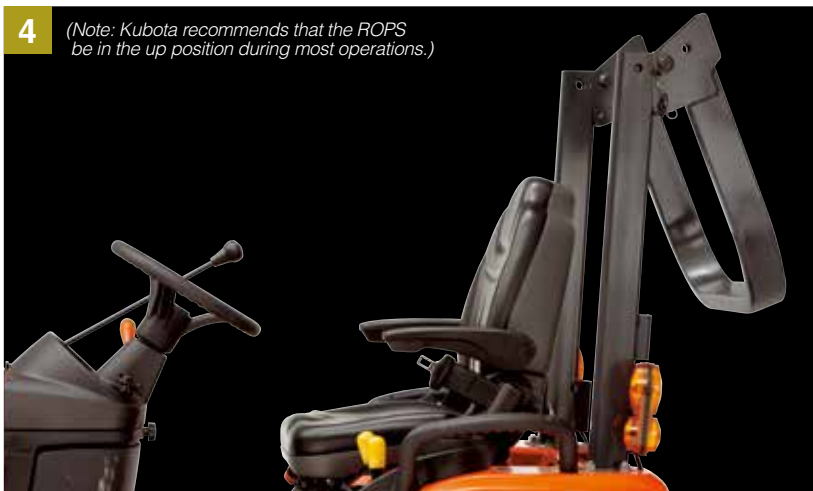
Cruise control automatically maintains a constant speed, letting you take your foot off the forward pedal. It's the easy way to mow large areas or travel long distances. (Optional on BX1870)

4. FOLDABLE ROPS

Now standard across all BX-Series models, this ROPS meets SAE specifications and provides for safe and efficient operation. It also folds down easily without tools, allowing the tractor to pass under low-hanging obstructions. It also makes for easier storage of the tractor in a garage or shed.



(Note: Kubota recommends that the ROPS be in the up position during most operations.)



DELUXE LEVER GUIDE

The BX-Series tractors feature large angled lever guides, for hassle-free shifting, fast control lever recognition and easy operation.

12V DC OUTLET

Charge your cell phone, mp3 player or other mobile device easily with the built-in 12-Volt socket.

2-PEDAL HST OPERATION

HST offers fast and smooth forward and reverse speed and direction changes via twin foot pedals that leave your hands free for steering and implement control.

HYDRAULIC POWER STEERING

A standard feature on all BX-Series tractors, hydraulic power steering offers effortless control, thereby reducing operator stress and fatigue.

NEW

KUBOTA EASY-OVER MID-MOUNT MOWER DECK

RCK54D-26BX
RCK60D-26BX

NEW EASY-OVER DECK **AVAILABLE IN 54" AND 60" SIZES**

Step 1:

Slide out the ramps and release the gauge wheels.



Step 2:

Drive over the deck.



Step 3:

Lock the deck in place with the Rear Deck Lock.



CLASS-LEADING DRIVE-OVER MOWER DECK **GROUND CLEARANCE**

The new Easy-Over mid-mount mower deck features a full 6 inches of transport ground clearance — best among sub-compact tractor drive-over mower decks. Class-leading ground clearance means much better clearance over otherwise damaging obstacles.

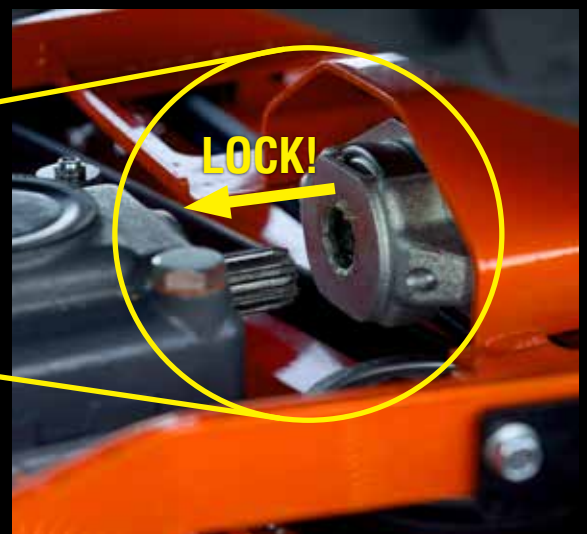
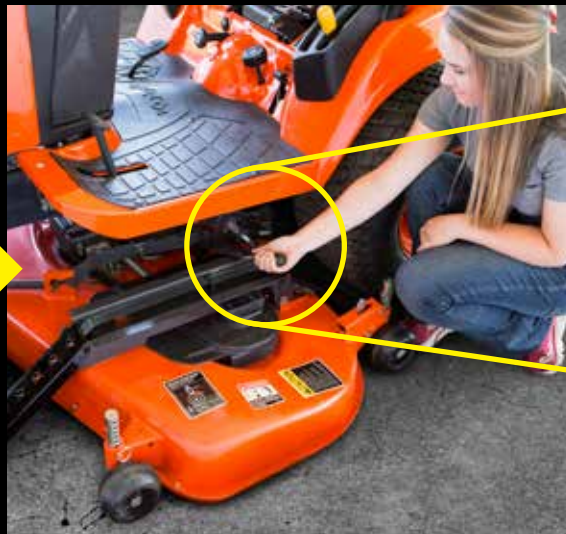




Kubota's new Easy-Over mid mount mower decks for the the BX sub-compact tractors make attaching and removing the mower deck a quick, easy and effortless operation.

Step 4:

Place with the easy to use Connect the PTO shaft using the easy one touch lever, and set the guage wheels.



Step 5:
Retract the ramps,
raise your deck, and
you're ready to go!

Prototype version of mower deck shown in photos above.

MID MOUNT MOWER

Choose a mower deck that best fits your desired cut and finish.

FINE CUT DECK

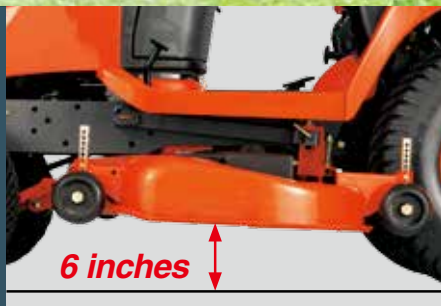


For finer cutting jobs and beautiful end results, the Fine Cut Deck is exactly what you're looking for. Kubota's baffle structure allows a fine cut, giving you a more professional finish. Our Fine Cut Deck also offers excellent performance with our optional mulching kit.



STANDARD DECK

This 3-blade mower offers a wide cutting area, allowing you to cut more grass in a single pass. Choose a 48"/54" deck for the BX1870 or a 54"/60" deck for the BX2370/BX2670/BX25D.



HIGH CLEARANCE

With 6 inches of clearance – more than any other tractor in their class – the BX-Series tractors easily travel over uneven ground and protruding obstacles.



MOWING-HEIGHT ADJUSTMENT DIAL

A simple twist of the dial adjusts the mower height in 1/4" increments to your desired cutting level.



DURABLE SHAFT DRIVE

The BX Series' shaft drive delivers power smoothly from the mid-PTO to the mid-mount mower. Unlike belt drives, there is no slippage and maintenance is minimal.



EASY ATTACH/DETACH

Implements such as the loader or mower can be attached and detached quickly and easily—saving you time and effort.

FRONT LOADER

Bring professional functionality to your BX with this powerful and stylish front loader.

A. KUBOTA-DESIGNED LOADER QUICK HITCH (Optional)

Front Loader-mounted implements are now a snap to attach and detach, thanks to Kubota's unique Quick Hitch system.



B. FRONT LOADER-MOUNTED IMPLEMENTS (Optional)

Options front loader attachments include pallet forks and 60" front blade, making the BX-Series even more versatile.



C. FRONT GUARD (Optional)

D. FRONT AXLE CAPACITY

The BX-Series' front axle is built for serious heavy-lifting work, from hauling loaded buckets to moving pallets of materials.



Curved Front Loader Boom

The BX's rounded boom perfectly complements the new overall tractor design. But its benefits don't end there. It also offers greater visibility.



PARKING STAND FOR EASY ATTACH/DETACH

The BX front loader has an H-shaped stand, which makes it easy to attach and detach. This design also provides additional protection for hoses when the stand is folded.

HOSE PROTECTION

The loader hoses are tucked inside the boom for greater protection and better operator visibility.

BX25D

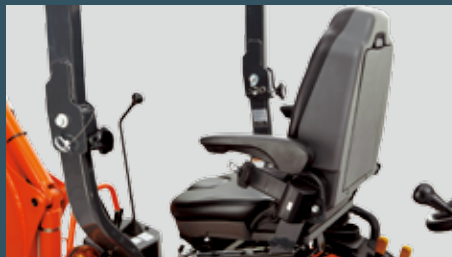
**Loading, mowing, digging—
whatever the job, the BX25D is ready**

Straight out of the gate, the BX25D is ready to go to work on your toughest jobs or dream projects. That's because it is equipped with a performance matched fully integrated backhoe and front loader as standard equipment. Kubota's unique Quick Hitch makes short work of attaching these and other implements, including the optional pallet fork and snow blade. The BX25D also has a specially reinforced frame that provides the durability, stability, and strength you need for heavy-duty implement work.



FRONT GUARD

A sturdy and distinctive front grill guard protects the front end and matches the tractor's sleek, rounded look.



REVERSIBLE SEAT

When it's time to switch from using the tractor or loader to using the backhoe, simply lift the reversible seat and swivel it to the back. The seat also can be adjusted forward and back for optimal operator comfort.



FOLDABLE ROPS

The BX25D's Rollover Protective Structure (ROPS) quickly folds without tools, letting the BX25D easily pass under low obstructions. It also makes storage in a garage or shed a snap.

(Note: Kubota recommends that the ROPS be in the up position during most operations.)

FRONT IMPLEMENT 4-POSITION CONTROL VALVE

Also standard on the BX25D, Kubota's front 4-position valve lets you quickly and easily attach the front loader and other front-mounted implements. The valve is tucked out of the way to maintain the BX25D's clean and sleek look.



A. KUBOTA ORIGINAL QUICK HITCH (Optional)

Front attachments are quickly and easily attached or removed, thanks to Kubota's unique Quick Hitch system.

B. FRONT LOADER ATTACHMENTS (Optional)

Optional loader attachments include pallet fork and front blade, giving the BX25D even greater versatility.



PALLET FORK (Optional)



SNOW BLADE (Optional)

A compact backhoe that's big on comfort and performance

With a purpose-built, spacious, comfortable operator station, the BX25D is designed for serious digging. The backhoe itself features a curved boom, ample legroom, 20° angle of departure, superior protection for the hydraulic hoses, an easy attach/detach system, and wide sight lines. It's the perfect tool for everyday tasks as well as tough jobs.

CURVED BOOM

A curved boom not only allows you to dig deeper without contacting the edges of the excavation area, it also increased lifting height.

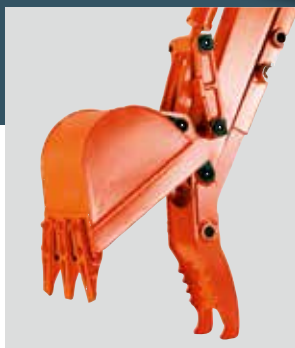
A. BOOM AND SWING CYLINDER CUSHION VALVES

Standard on the BX25D, an integrated cushion valve ensures smooth movement both horizontally and vertically, minimizing the shock that's transmitted to the operator when the backhoe arm hits its range limits.



WIDE VIEW

Tucking the hydraulic hoses inside the backhoe boom provides two great benefits—protection for the hoses and greater visibility for the operator.



MECHANICAL THUMB (Optional)

A positionable mechanical thumb gives the BX25D the ability to grasp and move logs, landscaping materials, and other items with ease, greatly expanding the types of jobs you can do around your property.

EASY IMPLEMENT ATTACHMENT/DETACHMENT

4-point mounting systems at both the front and back of the BX25D simplify attaching and detaching the backhoe, front loader, and other implements. No tools required!



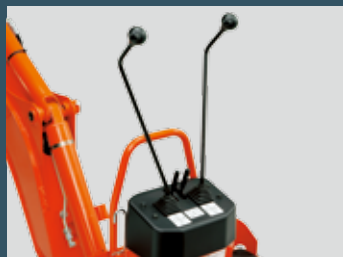
20° ANGLE OF DEPARTURE

Steep inclines pose no problem for the BX25D, thanks to its 20° angle of departure. It also means the tractor can be loaded onto trailers with the backhoe mounted.



PROTECTED HOSES

Tucking the hydraulic hoses inside the backhoe boom helps protect them from damage and the elements, thereby increasing their service life.



LEVER BOOTS

Boots at the bottom of the backhoe levers help protect the operating mechanisms from the elements as well as ensure smoother operation and longer service life.



MORE LEGROOM

Wide steps on each side of the boom controls provide more room—and comfort—for the operator's legs and feet.

IMPLEMENTS

Whatever the job—digging, mowing, scraping, plowing, tilling, or hauling—there's a BX-Series implement that will get the job done faster and easier. These implements are designed to allow fast, easy attachment and removal, so you can efficiently switch from one job to the next.



GRASS CATCHER

Loader Specifications

Model		LA203A	LA243A
		BX1870	BX2370/BX2670
Max. lift height (to bucket pivot pin)	in. (mm)	71.3 (1810)	
Dumping clearance	in. (mm)	53.1 (1350)	52.4 (1330)
Dumping reach at max. lift height	in. (mm)	28.3 (720)	28.9 (735)
Max. dump angle	degrees	40	45
Reach with bucket on ground	in. (mm)	52.4 (1330)	54.7 (1390)
Bucket rollback angle	degrees	30	29
Digging depth	in. (mm)	3.9 (100)	4.7 (120)
Overall height in carrying position	in. (mm)	38.2 (970)	39.0 (990)
Bucket width	in. (mm)	48 (1219)	
Lift capacity (500mm fwd., max. height)	lbs. (kg)	408 (185)	518 (235)

Lift capacity (pivot pin, max. height)	lbs. (kg)	617 (280)	750 (340)
Breakout Force (500mm fwd.)	lbs. (N)	882 (3920)	992 (4410)
Raising time to full height w/o load	second	2.8	3.5
Lowering time w/o load	second	2.0	2.7
Bucket rollback time	second	2.1	2.4
Bucket dumping time	second	1.8	1.7
Rated flow	gpm (l/min)	3.7 (14)	
Relief valve PSI	psi (kgf/cm ²)	1778 (125)	
Lift cylinder bore diameter	in. (mm)	1.57 (40)	
Tilt cylinder bore diameter	in. (mm)	2.56 (65)	
Bucket capacity (struck)	m ³ (cu.ft)	0.12 (4.2)	0.14 (4.9)

Industrial tire
(BX2370, BX2670, BX25D only)

Turf tire
(All models)

Bar tire
(BX1870, BX2370, BX2670 only)



SNOW BLOWER



SWEEPER



FRONT BLADE



FRONT QUICK HITCH SYSTEM

Mid-Mount Mower Specifications

Model	RCK48-18BX	RCK48P-18BX	RCK54-23BX	RCK54P-23BX	RCK60B-23BX
	BX1870		BX2370/BX2670 BX25D	BX2370/BX25D	BX2370/BX2670 BX25D
Type	Side discharge				
Number of blades	3				
Mounting method	Suspended-Linkage				Self Balance
Cutting width in. (mm)	48 (1219)	48 (1225)	54 (1372)	54 (1375)	60 (1524)
Cutting height in. (mm)	1.0 – 4.0 (25 – 102)				
Adjustment of cutting height	1/4" Dial gauge				
Weight lbs. (kg)	165 (75)	181 (82)	210 (95)	190 (86)	250 (115)
Ground clearance in transport position in. (mm)	6.0 (152)				

Easy-Over Mower

RCK54D-26BX	RCK60D-26BX
BX2370/BX2670	
Side discharge	
3	
Drive over Suspended-Linkage	
54 (1372)	60 (1524)
1.0 – 4.0 (25 – 102)	
1/4" Dial gauge	
269 (122)	295 (134)
6.0 (152)	

*Not compatible with bar tires.

Specifications

Model				BX1870-1	BX2370-1	BX2670-1	BX25D-1
Engine							
Type				Liquid-cooled, 3-cylinder diesel			
Model				Kubota D722	Kubota D902	Kubota D1005	Kubota D902
Engine gross HP at 3200 rpm*		HP (kW)		18.0 (13.4)	23.0 (17.1)	25.5 (19.0)	23.0 (17.1)
PTO horsepower at 3200 rpm		HP (kW)		13.7 (10.2)	17.7 (13.2)	19.5 (14.5)	17.7 (13.2)
Displacement		cu.in. (cc)		43.9 (719)	54.8 (898)	61.1 (1001)	54.8 (898)
Fuel tank capacity		gal. (ℓ)		6.6 (25)			
Drive train							
Transmission				HST, High-Low gear shift (2 forward / reverse)			
Drive method				4WD			
Brakes				Wet disc			
PTO				Live independent, wet hydraulic clutch			
Rear				STD (540rpm)			
Mid				STD (2500rpm)			
Hydraulics							
Pump output		gpm (ℓ/min.)		6.2 (23.5)			
3-point hitch				Category I			Optional
Lift capacity @ 24" behind pin		lbs. (kg)		680 (310)			
Steering				Hydrostatic Power Steering			
Tire size							
	Front	Turf/Bar/Industrial		16×7.5–8 / 16×7.5–8 / N.A.	18×8.5–10 / 18×8.5–10 / 18×8.5–10		18×8.5–10 / N.A./18×8.5–10
	Rear	Turf/Bar/Industrial		24×12–12 / 24×12–12 / N.A.	26×12–12 / 26×12–12 / 26×12–12		26×12–12 / N.A./26×12–12
Traveling speeds at rated engine rpm (Turf)		Forward	mph (km/h)	0–7.8 (0–12.5)		0–8.4 (0–13.5)	
		Reverse	mph (km/h)	0–5.9 (0–9.5)		0–6.5 (0–10.5)	
Dimensions							
Length with 3-point hitch		in. (mm)		92.1 (2340)	95.5 (2425)		
Width		in. (mm)		44.5 (1130)	45.1 (1145)		
Height with ROPS		in. (mm)		84.4 (2144)	85.4 (2169)		87.2 (2215)
Wheelbase		in. (mm)		52.8 (1340)	55.1 (1400)		
Ground clearance (front axle)		in. (mm)		8.7 (220)	8.4 (215)		
Tread		Front	in. (mm)	34.6 (880)	36.6 (930)		
		Rear	in. (mm)	32.2 (820)			
Turning radius (w/o brake)		feet (m)		7.2 (2.2)	7.5 (2.3)		
Tractor weight (w/ROPS)		lbs. (kg)		1345 (610)	1410 (640)	1466 (665)	1587 (720)

BX25D** Backhoe Specifications

Model		BT602
Bucket cylinder digging force	lbs. (N)	1936 (8610)
Dipperstick cylinder digging force	lbs. (N)	1171 (5209)
Boom swing mechanism		One cylinder
Shipping weight (with 12" bucket)	lbs. (kg)	607 (275)
Transport height	in. (mm)	67.7 (1719)
Loading height	ft. (mm)	5' (1533)
Digging depth	ft. (mm)	6'1" (1842)
Swing pivot to rear axle center line	in. (mm)	28.6 (726)
Reach from swing pivot	ft. (mm)	8'7" (2612)
Bucket rotation	degrees	180
Swing arc	degrees	140
Angle of departure	degrees	20.1

*SAE J1995

The company reserves the right to change the above specifications without notice.

This brochure is for descriptive purposes only. Please contact your local Kubota dealer for warranty and safety information.

For your safety, Kubota strongly recommends the use of a Rollover Protective Structure (ROPS) and seat belt in almost all applications.

**The loader and backhoe come standard on the BX25D model.

BX25D** Loader Specifications

Model		LA240A
Max. lift height (to bucket pivot pin)	in. (mm)	71.3 (1810)
Dumping clearance	in. (mm)	52.4 (1330)
Dumping reach at max. lift height	in. (mm)	26.0 (660)
Maximum dump angle	degrees	45
Reach with bucket on ground	in. (mm)	54.7 (1390)
Bucket rollback angle	degrees	29
Digging depth	in. (mm)	4.7 (120)
Bucket width	in. (mm)	48.0 (1219)
Lift capacity (500mm fwd, max. height)	lbs. (kg)	518 (235)
Lift capacity (pivot pin, max. height)	lbs. (kg)	750 (340)
Breakout force (500mm fwd)	lbs. (N)	992 (4410)
Raising time / lowering time (w/o load)	second	3.5 / 2.7
Bucket rollback time / dumping time	second	2.4 / 1.7

©2015 Kubota Corporation



KUBOTA CANADA LTD.

Head Office:
5900 14th Avenue, Markham, Ontario L3S 4K4
TEL: (905) 294-7477

Visit our web site at: www.kubota.ca

МОСТ ГРУПП

121357, Москва, ул. Козлова 30
Тел. +7 800 201 1280
Тел. +7 985 773 7851
E-mail: sales@most-technics.ru
Http: www.most-technics.ru

